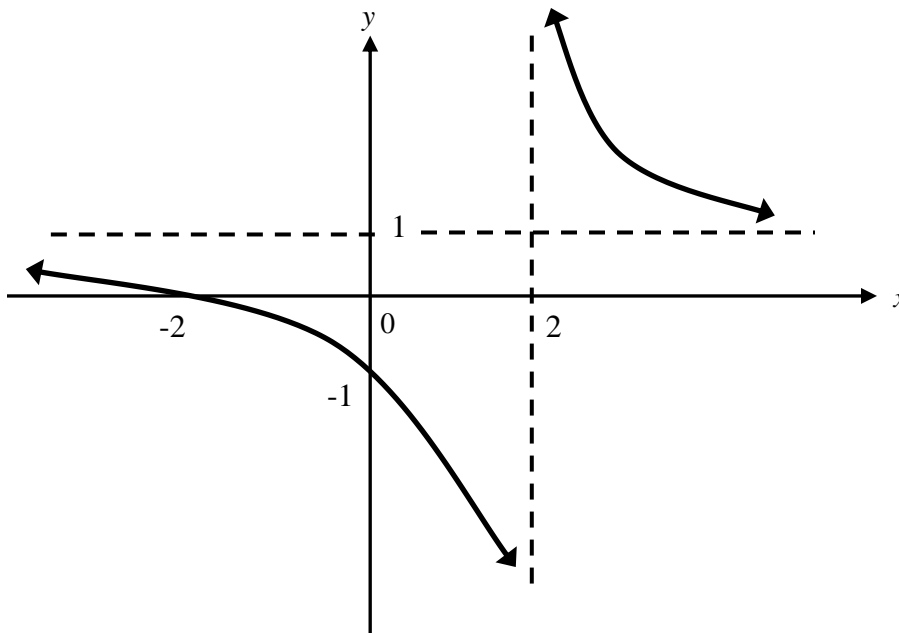


## Worksheet 4

### Year 12 Mathematics

Write the answers in your Exercise Book.

Study the **hyperbola** shown below and then answer the questions that follow.



- (a) What are the coordinates of the **x-intercept**? (1/2 mark)
- (b) What are the coordinates of the **y-intercept**? (1/2 mark)
- (c) State the equation of the **vertical** asymptote. (1/2 mark)
- (d) State the equation of the **horizontal** asymptote. (1/2 mark)
- (e) The graph has the equation of the form

$$y = \frac{x + a}{x - b}$$

Find the values of  $a$  and  $b$ . (1 mark)

- (f) State the **domain** of the function. (1/2 mark)
- (g) State the **range** of the function. (1/2 mark)